

IMPERIAL

Happenings

News from the Heavy Lift Specialists

Summer 2006



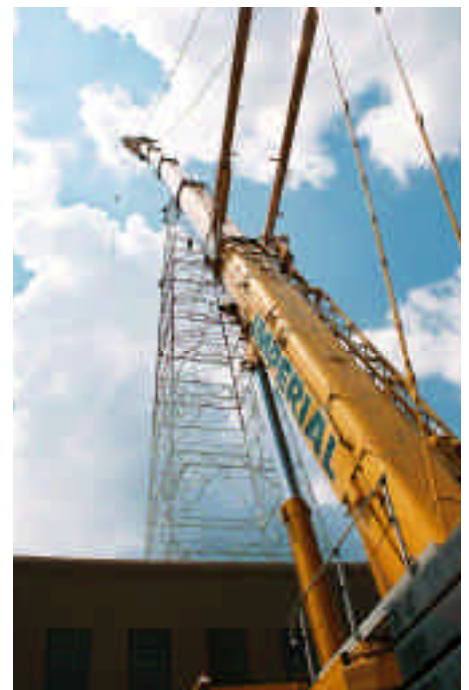
CURRENT PROJECTS

ESPN Towers

This job required our 360 Ton Hydraulic Truck Crane with heavy lift attachment.

We had to break down three outdated towers that were used by ESPN and erect three new towers. We worked for Installation Services on this job.

Imperial Crane is involved on almost every high profile job in the Chicago & Northwest Indiana area because of our reputation as the "Heavy Lift Specialists."



No crane company can compete with our vast experience and safety record. We have 37 years of experience in the crane rental industry.



1-888-HOIST IT

CURRENT PROJECTS



Our customer calculated six weeks to get the job done. We completed it in four weeks saving our customer over \$100,000.

Additions at Odyssey Lofts

When Tom Mooncotch from All Erection and Bob Scott from Scott Steel Services needed a crane to add three floors to the Odyssey Lofts they called Imperial Crane. They were looking for a crane that could set up on one side of the building and do the entire job from that one spot.

We didn't have the option of setting half from one side and half from the other side. It had to be set on one side working from the back toward the front. We decided to use our 500 Ton Hydraulic Truck Crane because of its huge reach.

Our customer calculated six weeks to get the job done. We completed it in four weeks saving our customer over \$100,000. Most of that credit belongs to the operator, Mike Swiderski, Sr.

Lance Bohne and Ricky Bohne did all the engineering and drawings for this job. Ricky Bohne, our Head Engineer, deserves a lot of credit for the smooth operation of this job. He is usually involved on all of our large lifts due to his experience with big cranes.

Biograph Theatre

The Biograph Theatre is a historic landmark because that is where John Dillinger, the gangster, was gunned down.

Pepper was the general contractor on the job and Imperial Crane was working for Gibson Electric and Midwest Mechanical, two of Imperial's best customers.

We used our 90 Ton Liebherr 1080/1 for the job because it allowed for one lane of traffic to stay open. This is the only crane that would do this job because it is so compact and only 22 feet wide, it is an excellent crane for downtown.

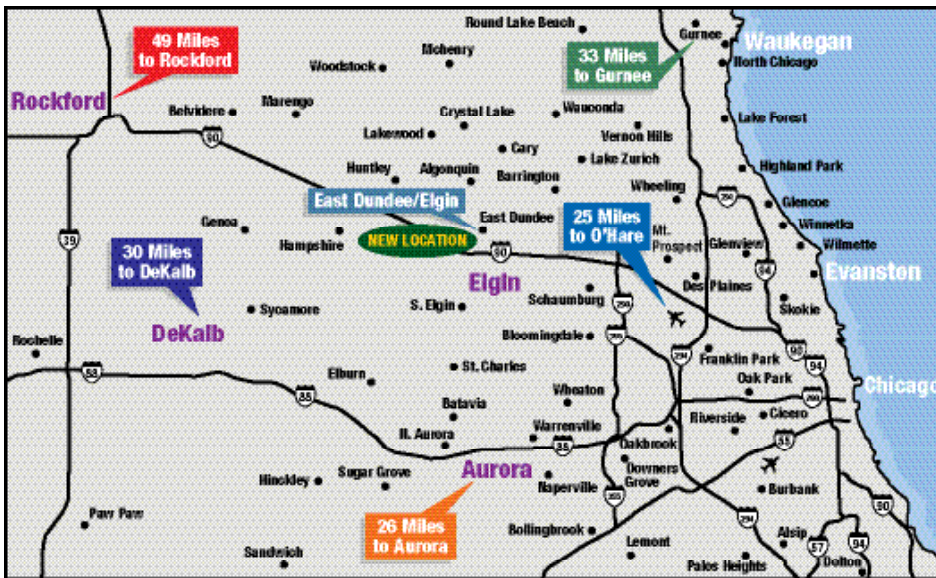
It is very important to leave a lane of traffic open because it could mean the difference of \$10,000.00 or \$50,000.00 for the street blocking permit



We used our 90 Ton Liebherr 1080/1 for the job because it allowed for one lane of traffic to stay open in each direction. This is the only crane that would do this job because it is so compact and only 22 feet wide, it is an excellent crane for downtown.



CURRENT PROJECTS



New Location Serving the Fox Valley, Northern Illinois, and Southern Wisconsin Area.

It's been almost a year now since Imperial Crane Services, made a strategic move to open a new yard in East Dundee/Elgin, Illinois. We are one mile north of the I-90 exchange on Route 25. We are located near Route #1 31, 47, 72, the Tollway and Randall Road. This makes it very easy for us to go from job to job. "We did over 1,900 jobs in the past year, and have widened our customer base to bring the industry standards to a new level", Branch Manager Al Collingbourne says.

It's amazing, the phone never stops ringing. People call to tell us that it is about time that someone realized the potential for a major crane company in this area. *Good Job Imperial!*

Our goal is simple: Arrive at the job quickly and safely and return home the same way. Our main goal is: To be safe and efficient on the job!!! When we achieve this everything else falls into place. Al or Don Collingbourne can be reached at 1-847-783-6700.

New Equipment Update

Imperial Crane has spent over \$7,000,000.00 on new equipment for late 2006, early 2007 delivery.

B.J. Bohne, President of Imperial Crane states that "the \$7,300,000 we are spending on All Terrain Cranes and Crawler Cranes is over and above the \$5,000,000 we spent on Rough Terrain Cranes coming this year."

We have spent over \$12,000,000 on new cranes in a one year span. This clearly makes us the leader in the industry in the Midwest!



Imperial bought

- 2 New Grove 3055's**
(60 Ton All Terrain Cranes)
- 2 New Tadano ATF 80's**
(100 Ton All Terrain Cranes)
- 2 New Tadano ATF 110 G's**
(130 Ton All Terrain Cranes)
- 2 New Tadano ATF 65 G's**
(75 Ton All Terrain Cranes)
- 2 New Manitowoc model 10,000's**
(100 Ton Crawler Cranes)

IMPERIAL NEWS

Youngest Brother Joins Team



Jonathan Bohne, who recently graduated from Arizona State University, is now working at Imperial Crane.

Jonathan will be learning all aspects of Imperial Crane from sales to parts. Once he is familiar with all areas of Imperial Crane we will decide where Jonathan can provide the best service for this family company. "Jonathan graduated with honors, so it should be relatively easy for him to take on any role at Imperial" stated his older brother Lance Bohne.

Imperial Goes Auto CAD

Imperial Crane had a major investment by going to Auto CAD. We are the **only** crane company that can create drawings with the Computer Assisted Drawings program in the Chicago area.

Due to the high demand of our industrial contracts, we decided to invest in the Auto CAD program. Lance Bohne stated "We are years ahead of our competition as far as safety and the capacity to do drawings."

Special thanks to Larry Gedmin for his outstanding performance as Imperial's Indiana Branch Manager.



A special thanks to our terrific staff who last year set a new sales record and are on pace to beat that this year:

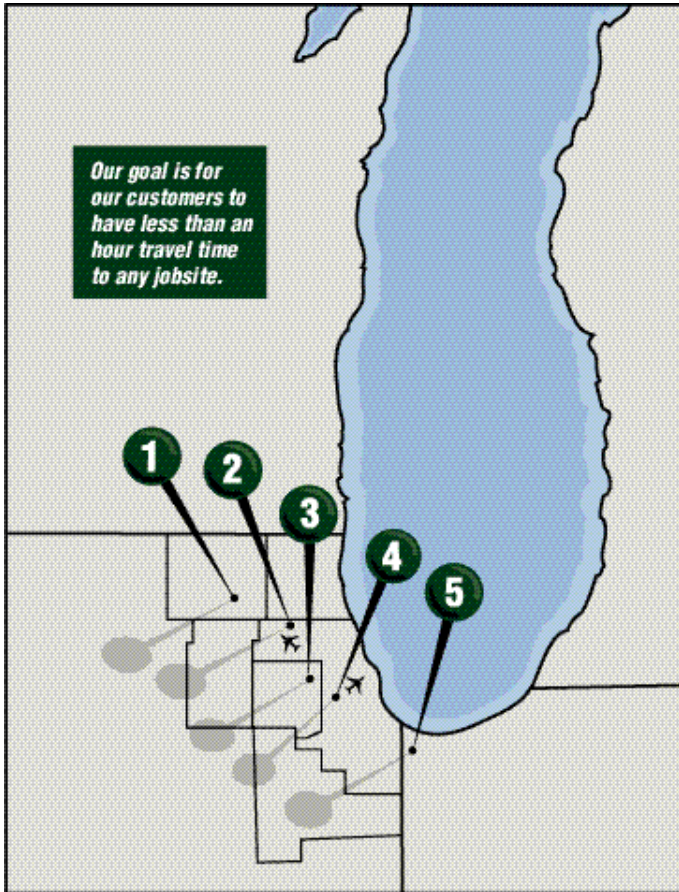
Laurie Wagner
Donna Fitzmaurice
David Dobson
Donna Koch
John Tierney
Ken Ritter
Jack Seale
Jonathan Bohne
Larry Gedmin
Janice Fitzpatrick
Don Collingbourne
Ricky Bohne
Herb Harmon
Fred Hunsinger
Al Collingbourne
Jeanette Ryglewski

Jim Finucane
Eric Lucas
Wes Austin
Ryan Carley
Phil Lukacek
Mark Priepot
Mike Boyle
Larry Eckardt
Carolyn Bohne
Nora Austin
Jay Mooncotch
Bill Tierney
Lance Bohne
B. J. Bohne
Corey Doyle



IMPERIAL CRANE SERVICES, INC.

*Our goal is for
our customers to
have less than an
hour travel time
to any jobsite.*



Five convenient locations:

1. 7500 W. Imperial Drive • Bridgeview, IL 60455
Phone: 708-598-2300 • Fax: 708-598-2313
2. 1349 Main Street • Griffith, IN 46319
Phone: 219-924-2900 • Fax: 219-924-3800
3. 15 N 272 Route 25 • East Dundee, IL 60118
Phone: 847-783-6700
4. 2100 S. Mt. Prospect Rd. • Des Plaines, IL 60018
Phone: 708-741-5759
5. 7600 Santa Fe Dr. • Hodgkins, IL
Phone: 708-741-5759

www.imperialcrane.com

Toll Free: 1-888-HOIST IT

7500 W. Imperial Drive
Bridgeview, IL 60455

IMPERIAL
CRANE SERVICES, INC.

